

Primary Post - Special Edition Return to Remote Learning

Telephone: 9716 2140
Fax: 9716 2516
Email: whittlesea.ps@edumail.vic.gov.au

*Respect Your School
Do Your Best
Help Others Succeed*



Issue 20–16th July, 2020

PRINCIPAL & ASSISTANT PRINCIPAL REPORT

Hello everyone,

Term 3 has commenced in the most unusual of ways. Five student free days were announced towards the end of the school holidays as part of the plan to transition back to remote learning for Term 3. We know our community have many questions and we hope to answer as many of these as we can through a communication pack being distributed today. This newsletter, in combination with a detailed 'Remote Learning Schedule' in both text and graphic form, will contain the latest information and make essential reading for every Whittlesea Primary School community member.



Transition to Remote Learning

Teachers have been reviewing our remote learning program from Term 2 and have spent this week preparing new content to deliver through Microsoft Teams.

Remote Learning Commences for Years F – 6 on Monday, July 20th

- All students are highly encouraged to learn through the same platform as last term – Microsoft Teams. For those who choose an offline learning pack will be distributed through Compass this week. Please contact the office on 9716 2140 if you are unable to print the distributed PDF.
- New blank remote learning workbooks are available in the office for those who require another book

Changes from Term 2

- We will utilise 'Assignments' for the distribution and submission of learning in Teams. This should make the process of distributing learning tasks, directing students to particular learning and the giving and accessing of feedback a much better experience than in Term 2.
- 1. Learning this new feature will be a focus on Monday.
- A revised daily schedule balances several factors. It is important we remain focused on academic achievement and progression through the curriculum. It is also important that our schedule reduces the stress and demands on homes during this challenging period. The schedule involves consistency and predictability in meetings with more time allocated to short, achievable learning tasks. We appreciate the demands of work and school in the remote learning environment, so the

OFFICE HOURS

Office opening hours
8.30am – 4.00pm until
further notice

HAPPY BIRTHDAY

Wishing the following
children a very
Happy Birthday!

4th July
Edmund 03W

5th July
Zack 01F
Seth 04P

6th July
Amber 00S
Charlotte 06M

7th July
Alexx 03W
Hunter 05L

10th July
Jack 00S

11th July
Harvey 03C

12th July
Willem 04M
Brock 05L

13th July
Kory 00V
Jordan 05P

15th July
Nicole 04M

16th July
Azariah 00V



time and quantity of student work has been prioritised to the most important needs with plenty of time for recreation. Students will be learning for approximately 3 hours every day. Latest research indicates those students who worked to consistent schedules had the best outcomes from Term 2.

- Whittlesea's Wonderful Wednesdays! One consistent online session across the school will be conducted weekly at 2:20pm on Wednesdays. This will be a fun, connection session that may be a game, challenge, story or similar. We are acutely aware of the need to support wellbeing and the need for students to remain connected. All classes will have this one experience weekly.

Technology / Bring Your Own Device Program for 2021

Technology will once again be distributed to families who require it. Please be aware that only a limited insurance policy is in place and it is important these devices return to school in the condition they were sent out. If you have not already completed the digital form sent out earlier in the week, please call 9716 2140 immediately to secure one of our devices.

We appreciate that some parents may be considering purchasing a new device. Please be aware that Whittlesea Primary School has been completing early stage planning for a 'BYOD' or Bring Your Own Device program for Years 4, 5 and 6 to commence in 2021. We are choosing to share this now before a detailed launch of the program with all relevant information because our future program may have implications for private device purchases.

If you are considering purchasing a new device for your child please contact our school on 9716 2140 for advice on our BYOD Program.

While there may be a possibility of purchasing an approved device that will align with our future program, our advice is to loan a device from school and not purchase now. Any private purchases, made now may not be compatible with our future planned program.

An information pack regarding BYOD will be distributed soon and we're looking for ways to share all the information as easily as possible through video and live meetings. Again – please call our school to avoid future disappointment over a device purchase.

Onsite Operations

- Students attending onsite must fall within the criteria set by the Department of Education and Training.
 - All students must have their attendance registered with the school through the online form.
 - All students will be temperature checked upon entry to Whittlesea Primary School. If a child presents with a temperature above 37.5 degrees, they will be unable to remain onsite and parents will be called to collect the child. Please keep all students at home if they exhibit even mild symptoms of illness.
 - All students require headphone / ear buds with a microphone. Hands free phone buds should be suitable.
 - Pencil cases are required for each student if these are at home from last term.
- An enhanced cleaning and hygiene process remains in place at our school. Playgrounds, classrooms and common spaces will be cleaned routinely and hand sanitiser use and hand washing will be frequent throughout the day.

Communication

We ask that parents respect the teachers difficult roles at present and maintain communication through the Compass portal. Teachers will be adhering to normal work hours. While all our staff endeavour to support each individual family when they need assistance, immediate contact is not always possible. A timely turnaround for all written correspondence is 24 hours. Contact over the phone to address concerns or queries is possible when available. Utilising student's Teams account for chat function with a teacher is not preferred as this is an avenue for communication with the child regarding their learning.

Cyber Safety

At Whittlesea Primary School, we take pride in prioritising our students' academic, social and emotional wellbeing. Promoting mental health through education, allows our students experience success, ensuring they build resilience and positive relationships throughout their educational journey.

Whittlesea Primary School aims to provide our students with the skills and confidence to make informed decisions or seek assistance from parents, teachers, or administrative consultants with conflict resolution.

In the current climate, our students will be using ICT and digital technologies. It is important that our students to be educated on the correct protocols when communicating using various platforms of information technology.

For additional assistance the Australian Government has developed the eSafety Commission. Parents should explore this website.



<https://www.esafety.gov.au/parents>

Fundraising

Unfortunately, due to the current COVID-19 restrictions we have decided to cancel our planned Chocolate fundraiser for Term 3. We are currently looking for other opportunities to raise funds for our school throughout semester 2.

Thank you for your ongoing support. At the conclusion of the first period of remote learning we were appreciative of the many messages of positivity and gratitude. We're motivated to build on the successes of Term 2 and make changes to constantly improve and get the most from the current circumstances.

Apologies for the information overload, but it is important to share as much information as possible around our school's approach moving forward.

Take care and let's have a great Term 3!

Kind regards,
Ty Hoggins and Rae Gittos
Principal Team

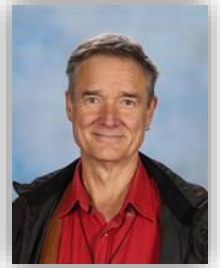
SCHOOL CHAPLAIN REPORT

Peter Ackland - school chaplain

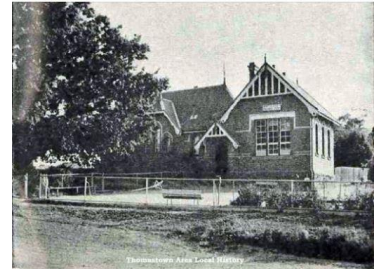
School History 1961-1965

Reginald B. Broben (1957-1965) enjoyed a good working relationship with the School Committee and Mothers' Club. There were always school needs to be addressed. In 1961, fly wire screens and a sound system were installed. There was also some talk about acquiring additional adjoining land to add to the two existing acres. In 1962, Broban reported that the **Plantation** (explained in a later article) **Fund** had a credit balance of £383-2-9.

1963 was the first year that there was no member of staff who could play the piano. Broben reported that a fleet of buses were taking children to see the Queen. He also stipulated that 29 adults *only* could join this excursion to the city. There were 158 children attending the school at the time and the school was fully staffed. He was still hoping for a hot water service to be installed in the residence and it was finally approved by the Department the following year. Committee member Mr Woods proposed a "Back to School" day and showed a Weekly Times copy of the last such event (1937). In a later meeting that year, the "Back to School" activity had made a credit of £242-4-7. The Committee generously gave £50 to the Whittlesea Swimming Pool Committee in their appeal.



From a 1963 issue of Victoria's Resources magazine. — at Whittlesea Primary School.



WHITTLESEA SCHOOL, GRADES 5 AND 6 PUPILS, 1965

Back row (from left): G. Burton, A. McPherson, S. Smith, A. Lorenseni, N. Andrews, G. Bayliss, C. Hayton, M. Dickinson. *Third row*: M. Fletcher, D. Morcombe, R. Hocking, M. Berry, D. Dickinson, P. Collins, G. Miller, A. Coulthard, J. McPherson, A. Miller, G. Quinton. *Second row*: S. Stuart, R. Papeleo, N. Owendon, A. Mason, A. Batten, M. Blandford, C. Wilson, V. Russell, G. Jackson, M. Cockerell, K. Berry, T. Bradley. *Front row*: S. McKenzie, G. —, G. Wood, Z. Whitchurch, L. Jones, W. Wailes, S. Harvey, J. Searle, P. Giffin, C. Hall, —. The headteacher is Mr Reginald B. Broben, the other is unidentified.

In 1964, the school attendance had increased to 163 pupils and Whittlesea State School was no longer in the Seymour inspectorate but had been changed to Lilydale.

1965 was Reginald Broben's last year. He reported to the Committee that he would be leaving in December and that the new head teacher would be Mr Ryan from Yallourn North State School. Before the year's end, Broben arranged for the planting of 120 trees in the **School Plantation** (Ridge Road) and the 'shire' council sign, still there, is in close agreement.



To be continued...

★ Star of the Week ★

Foundation V Vitale	Awarded to: Nella Kessler For: always coming to school with a positive attitude and doing her best with all her learning.
Foundation S Scoberg	Awarded to: Lachlan Abbott For: always showing our school expectation of 'Respect your school' by making sure our classroom is always tidy.
Foundation C Capito	Awarded to: Kiara Brander For: doing her best by stretching her sounds when writing words. Well Done!
Year 1P Perry	Awarded to: Kaleb Clark For: always being a polite and helpful class member.
Year 1D De Luca	Awarded to: Tayze Lindsay For: trying really hard and learning lots of new words!
Year 1FD Fontana/Dunstone	Awarded to: Jade Murray For: having a positive attitude towards her learning at all times.
Year 2F Fawcett	Awarded to: Indiana Halley For: being a fabulous team member by always offering to help others around her. Excellent work Indiana!
Year 2S McCormick	Awarded to: Spencer Sullivan For: demonstrating persistence and determination while learning about area and perimeter. Well done!
Year 2M Merritt	Awarded to: Hanah Elsey For: being a respectful class member and helping others succeed.
Year 3CP Cook/Pearce	Awarded to: Damon Gibson For: always trying his best!
Year 3M Mason	Awarded to: Charlie Watt For: her outstanding effort in maths this week. Her attention to detail was phenomenal.
Year 3W Wright	Awarded to: Alice Bowlen For: striving for excellence in mathematics. Well done Alice!
Year 4P Powell	Awarded to: Matthew Smith For: doing his best when writing his talisman poem using Dusty's jumper as the talisman.
Year 4O Overton	Awarded to: Dahlia Khana For: working extremely hard on her times tables.
Year 4M Mondon	Awarded to: Sarah Mavric For: always having a positive attitude towards learning. Well done Sarah!
Year 5P Panahinejad	Awarded to: Charlie Higgs For: his improved research skills to gather information from the internet.
Year 5L Leslie	Awarded to: Jackson Burgiel For: showing an incredible growth mindset in Maths, Reading and Writing.
Year 5RM Reid/McAlley	Awarded to: Maxwell Charity For: finishing the term with a positive focus on your learning.

Year 6G Gorski	Awarded to: Jade Mavric For: always completing her learning, helping others to succeed and never giving up on any task.
Year 6M Maxfield	Awarded to: Hunter Penford For: great effort with his work during all of term two and being a respectable classmate.
Year 6S Smith	Awarded to: Lachlan Roche For: putting in a great effort when multiplying and dividing fractions by fractions. Excellent job!

